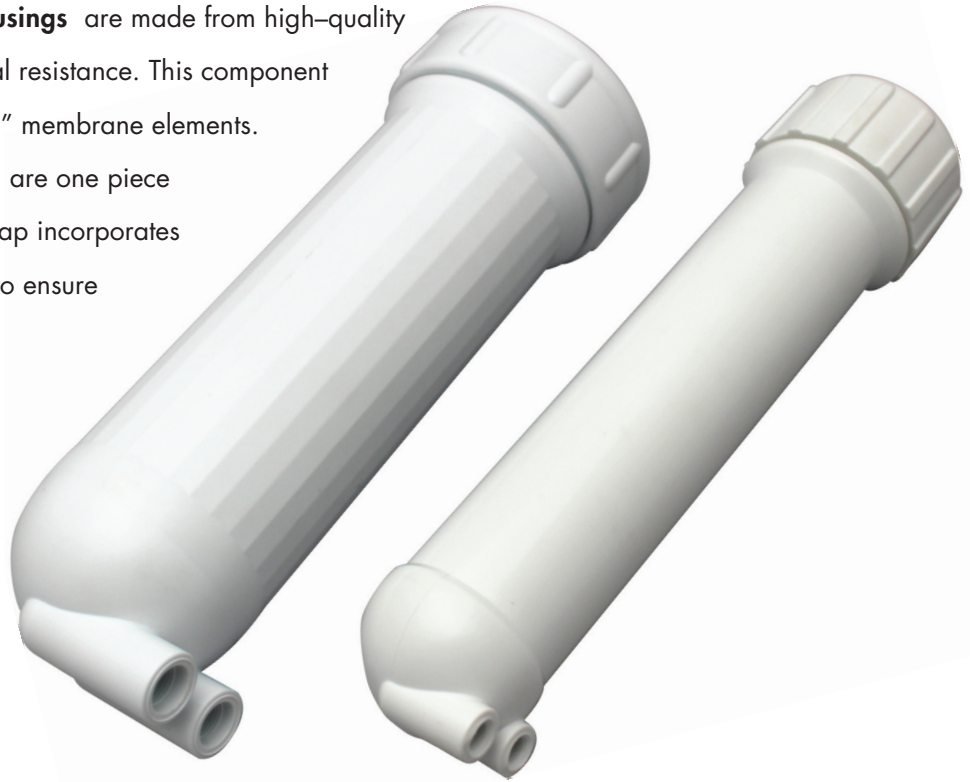


Residential Membrane Housings

AXEON Residential Membrane Housings are made from high-quality polypropylene, which offers chemical resistance. This component will accommodate most standard 12" membrane elements.

Both the ribbed cap and the housing are one piece injection molded parts. The ribbed cap incorporates acme square threads and an o-ring to ensure a leakproof seal.



AXEON
Residential Membrane Housings

Benefits

- Test Burst Pressure: 400 psi
- Single O-Ring End Cap Design
- Standard FNPT Molded Threads
- One Piece Injection Molded Cap and Housing
- Cycle Test: 150,000 Cycles at 150 psi

Operating Limits

- Maximum Operating Pressure (psi / bar): 90 / 6.2
- Minimum Operating Temperature (°F / °C): 35 / 2
- Maximum Operating Temperature (°F / °C): 125 / 52

Product Specifications

Part Number	Model Number	Number of Membranes	Case Quantity	Diameter (in / mm)	Length (in / mm)	Feed FNPT (in)	Permeate FNPT (in)	Concentrate FNPT (in)
200507	2012	1	24	2.00 / 50.80	12.00 / 304.8	1/8	1/8	1/8
208438	3012	1	20	3.00 / 76.20	12.00 / 304.8	3/8	3/8	3/8

Know Higher Standards™

